

Supreme Benefits and Code Approvals

THE VALUES YOU RECEIVE WITH SUPREME

- Superior Quality Mill Certified Steel
- 3rd Party Code Compliant Certification
- High Yield 57 ksi Steel
- Stronger than Traditional Products
- Nation Wide Availability from 6 Manufacturers
- Stronger Screw Pull-Out Loads

THE BEST OF PRODUCTS AND SERVICES

- Free Technical Assistance and Support
- Knowledgeable and Well Trained Field Reps
- Full Line of Studs, Track, Clips, and Connectors
- Deflection Systems, Shaftwall, Headers and Jamb Systems
- Curved Track and Curved Angle Products

REFERENCES AND CODE APPROVALS

AISI "North American Specification for the Design of Cold-Formed Steel Structural Members"

ASTM American Society for Testing and Materials

- A653** "Standard Specification for Steel Sheet, Zinc - Coated (Galvanized) or Zinc - Iron Alloy - Coated by the Hot - Dip Process"
- C645** "Standard Specification for Non-structural Steel Framing Members"
- C754** "Standard Specification for Installation of Steel Framing Members to Receive Screw - Attached Gypsum Panel Products"
- E119** "Standard Test Methods for Fire Tests of Building Construction and Materials"
- E72** "Standard Test Methods of Conducting Strength Tests of Panels for Building Construction"
- E90** "Standard Test Method for Laboratory Measurement of Airborne Sound Transmission Loss of Building Partitions and Elements"

SCREW CONNECTIONS - PER AISI SECTION E4

		Allowable Loads (lb/screw)													
Steel Thickness		Steel Prop. (ksi)		No. 12 - 0.216 in. dia.			No. 10 - 0.190 in. dia.			No. 8 - 0.164 in. dia.			No. 6 - 0.138 in. dia.		
Mils	Design (in)	Fy (ksi)	Fu (ksi)	Shear	Pullout	Pullover	Shear	Pullout	Pullover	Shear	Pullout	Pullover	Shear	Pullout	Pullover
30EQ	0.0235	57	65	152	93	191	143	82	191	133	71	191	122	60	191
43EQ	0.0400	57	65	338	159	325	317	140	325	295	121	325	270	102	325

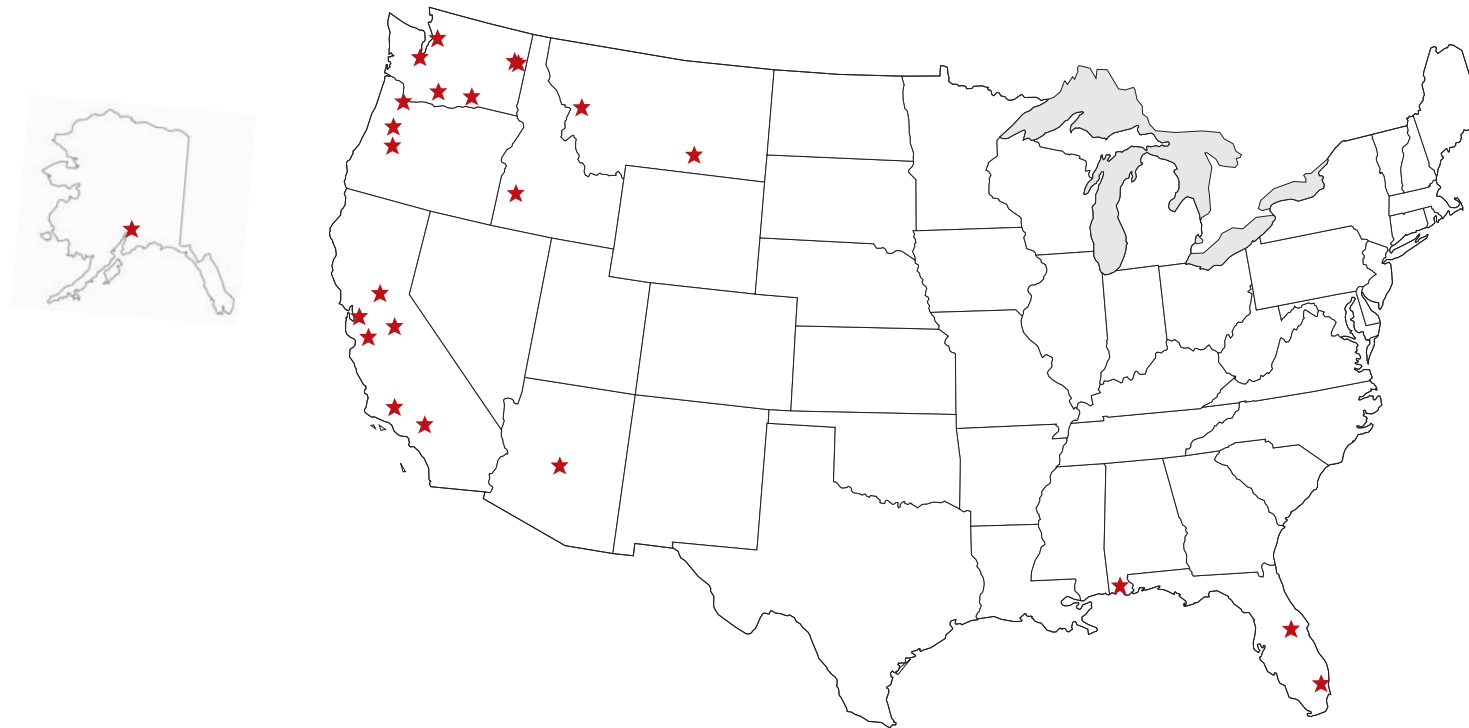
Notes: 1. All values assume that the nominal strength of the screw itself is at least 1.25 times the design strength. Listed values use a factor of safety of 3.
2. Pullover values assume a minimum head/washer diameter, dw, of 1/4"



SUPREME STEEL FRAMING SYSTEM ASSOCIATION

Independent Supreme Framing System Manufacturing Companies

★ Supreme Framing Manufacturers



SUPREME FRAMING SYSTEM

www.SupremeFramingSystem.com

AllSteel & Gypsum Products, Inc
Ft. Lauderdale, FL

Quail Run Building Materials
Phoenix, AZ

United Metal Products, Inc.
Corona, CA

SCAFCO Steel Stud Mfg.
Spokane, WA

Steel Construction Systems
Orlando, FL

Consolidated Fabricators Corp.
Fontana, CA



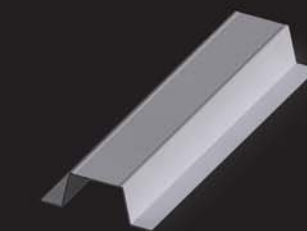
SUPREME STEEL FRAMING SYSTEM ASSOCIATION



SUPREME FRAMING SYSTEM

Mail@SSFSA.com
www.SSFSA.com

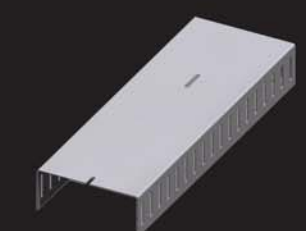
SUPREME FRAMING ACCESSORIES 30EQ & 43EQ LINE



FURRING CHANNEL



CORNER STUD



SLOTTED TRACK



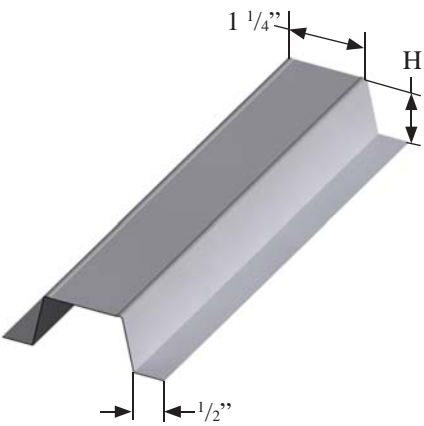
CUSTOM SHAPES

Supreme 30EQ & 43EQ Framing Accessories

Supreme 30EQ & 43EQ Hat Channel

Hat shapes are used as cross members for the attachment of gypsum wallboard to ceilings or partitions. They are also used to furr out masonry walls, installed vertically to the wall surface.

- Available in 7/8" and 1 1/2" (Custom Sizes Available)
- Standard Lengths are 12' and 20' (Additional Lengths Available)
- Corrosion Resistant Galvanized Coating
- 57 ksi Yield Strength (Domestic Mill Certified Steel)



Quantity / Order Information					
Model No.	Galvanized Coating	Yield Strength	Design Thickness	Flange (H) Height	Stock Length (ft)
087F125-30EQ	G-40	57	0.0235	7/8"	12, 20
087F125-43EQ	G-60	57	0.0400	7/8"	12, 20
150F125-30EQ	G-40	57	0.0235	1 1/2"	12, 20
150F125-43EQ	G-60	57	0.0400	1 1/2"	12, 20

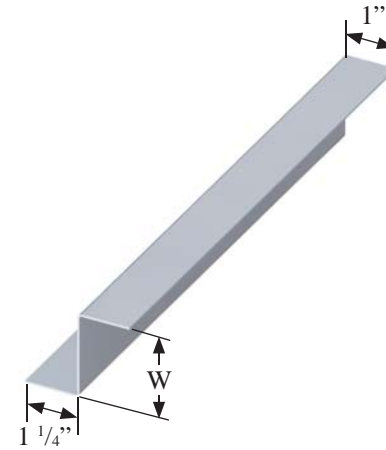
30EQ Available in G-60 Galvanized Coating on Special Orders

Section Properties					
Section	Yield Strength (ksi)	Design Thickness (in)	Gross Area (in ²)	Effective Properties	
				I _{xx} (in ⁴)	Ma (ft lb)
087F125-30EQ	57	0.0235	0.0873	0.0105	55.41
087F125-43EQ	57	0.0400	0.1454	0.0178	108.48
150F125-30EQ	57	0.0235	0.1169	0.0368	119.63
150F125-43EQ	57	0.0400	0.1959	0.0631	228.11

Supreme 30EQ & 43EQ Z-Furring

Z-Furring channels are superior for furring out masonry or concrete walls to support rigid insulation board, fiberglass or mineral insulation.

- Available in 1", 1 1/2", and 2" (Custom Sizes Available)
- Standard Lengths are 10' (Additional Lengths Available)
- Corrosion Resistant Galvanized Coating
- 57 ksi Yield Strength (Domestic Mill Certified Steel)



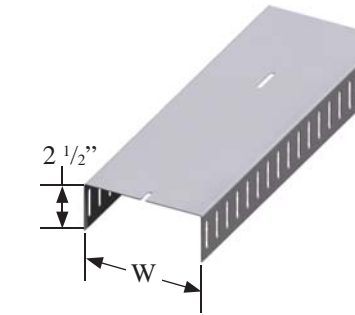
Quantity / Order Information					
Model No.	Galvanized Coating	Yield Strength	Design Thickness	Web (W) Width	Stock Length (ft)
100ZF125-100-30EQ	G-40	57	0.0235	1"	10
100ZF125-100-43EQ	G-60	57	0.0400	1"	10
150ZF125-100-30EQ	G-40	57	0.0235	1 1/2"	10
150ZF125-100-43EQ	G-60	57	0.0400	1 1/2"	10
200ZF125-100-30EQ	G-40	57	0.0235	2"	10
200ZF125-100-43EQ	G-60	57	0.0400	2"	10

30EQ Available in G-60 Galvanized Coating on Special Orders

Supreme 30EQ & 43EQ Slotted Track

SSFSA Supreme Slotted Track is the industry preferred system for achieving head of wall deflection and fire rated assemblies for interior walls. It also provides a positive wall attachment and allows up to 1 1/2" of vertical movement.

- Available in All Standard Stud Widths
- Standard Lengths are 10' (Additional Lengths Available)
- Corrosion Resistant Galvanized Coating
- 57 ksi Yield Strength (Domestic Mill Certified Steel)



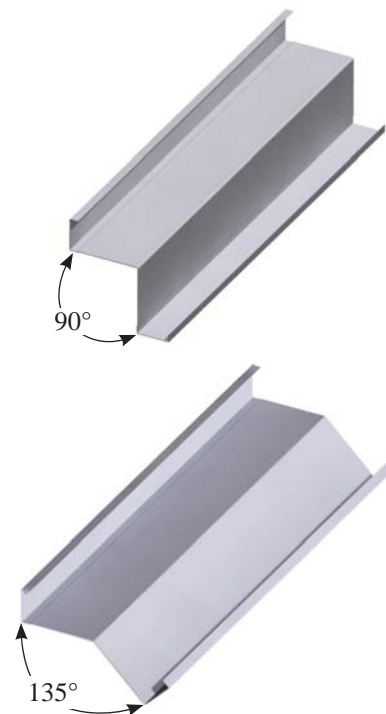
Quantity / Order Information						
Model No.	Galvanized Coating	Yield Strength	Design Thickness	Web (W) Width	Leg (L) Height	Stock Length (ft)
162SLT250-30EQ	G-40	57	0.0235	1 5/8"	2 1/2"	10
162SLT250-43EQ	G-60	57	0.0400	1 5/8"	2 1/2"	10
250SLT250-30EQ	G-40	57	0.0235	2 1/2"	2 1/2"	10
250SLT250-43EQ	G-60	57	0.0400	2 1/2"	2 1/2"	10
362SLT250-30EQ	G-40	57	0.0235	3 5/8"	2 1/2"	10
362SLT250-43EQ	G-60	57	0.0400	3 5/8"	2 1/2"	10
400SLT250-30EQ	G-40	57	0.0235	4"	2 1/2"	10
400SLT250-43EQ	G-60	57	0.0400	4"	2 1/2"	10
600SLT250-30EQ	G-40	57	0.0235	6"	2 1/2"	10
600SLT250-43EQ	G-60	57	0.0400	6"	2 1/2"	10
800SLT250-30EQ	G-40	57	0.0235	8"	2 1/2"	10
800SLT250-43EQ	G-60	57	0.0400	8"	2 1/2"	10

30EQ Available in G-60 Galvanized Coating on Special Orders

Supreme 30EQ & 43EQ Corner Stud and Angle Stud

Supreme Corner Stud SCS and SAS eliminates multiple studs in a built-up connection reducing material costs and installation labor. Current construction methods use two or three studs to create an intersecting or corner wall only to accommodate gypsum board attachment. The SCS and SAS will provide a single square corner and solid backing for the gypsum improving the finished product.

- Reduces Multi-Member Build-Up
- Available in Intersecting 90° and 135° Walls
- Standard Lengths are 10' and 12' (Custom Lengths are Available)
- Corrosion Resistant Galvanized Coating
- 57 ksi Yield Strength (Domestic Mill Certified Steel)



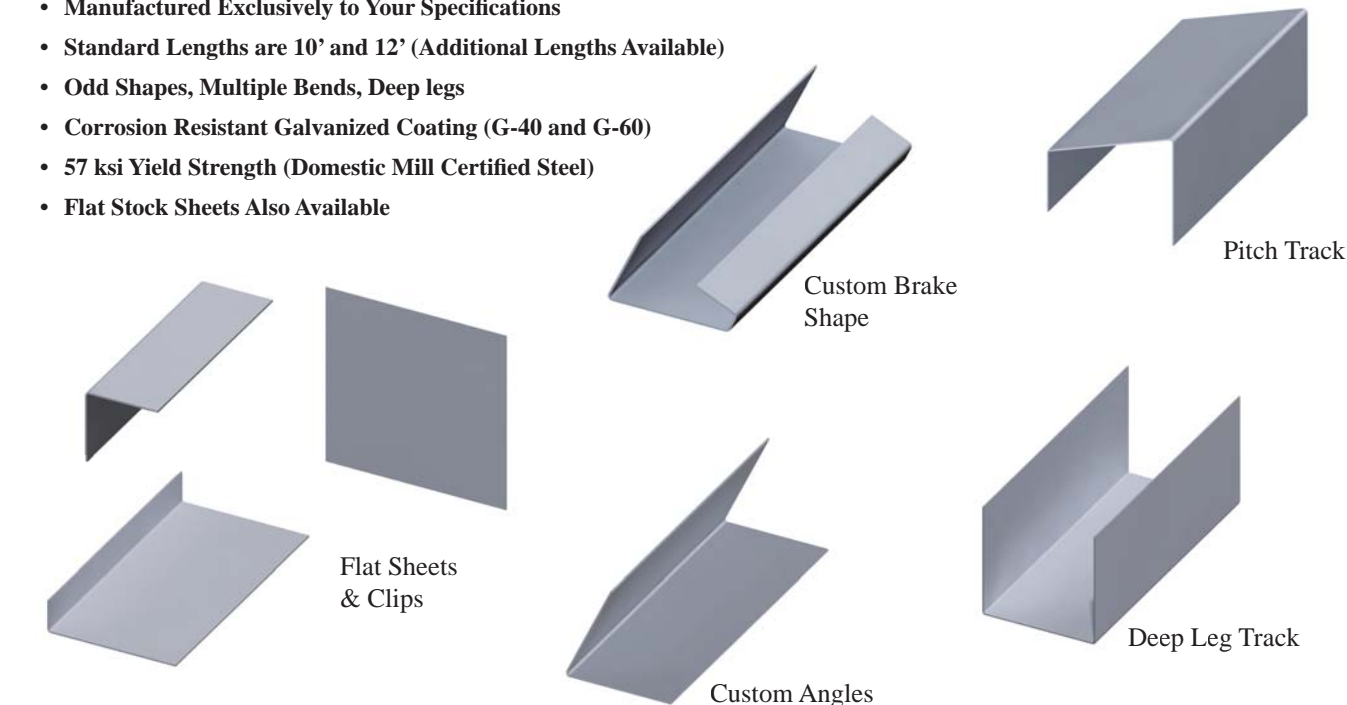
Quantity / Order Information					
Model No.	Galvanized Coating	Yield Strength	Design Thickness	Web (W) Width	Stock Length (ft)
400SCS-30EQ	G-40	57	0.0235	2" X 2"	10, 12
400SCS-43EQ	G-60	57	0.0400	2" X 2"	10, 12
400SAS-30EQ	G-40	57	0.0235	2" X 2"	10, 12
400SAS-43EQ	G-60	57	0.0400	2" X 2"	10, 12
600SCS-30EQ	G-40	57	0.0235	3" X 3"	10, 12
600SCS-43EQ	G-60	57	0.0400	3" X 3"	10, 12
600SAS-30EQ	G-40	57	0.0235	3" X 3"	10, 12
600SAS-43EQ	G-60	57	0.0400	3" X 3"	10, 12

30EQ Available in G-60 Galvanized Coating on Special Orders

Supreme 30EQ & 43EQ Custom Shapes

SSFSA offers a broad selection of custom brake shapes for a wide range of construction applications.

- Manufactured Exclusively to Your Specifications
- Standard Lengths are 10' and 12' (Additional Lengths Available)
- Odd Shapes, Multiple Bends, Deep legs
- Corrosion Resistant Galvanized Coating (G-40 and G-60)
- 57 ksi Yield Strength (Domestic Mill Certified Steel)
- Flat Stock Sheets Also Available



Furring Channel Allowable Ceiling Spans L/240												
Section	Thickness (mils)	F _y (ksi)	Spans	Applied Load								
				4 psf Hat Spacing (in) o.c.			6 psf Hat Spacing (in) o.c.			13 psf Hat Spacing (in) o.c.		
				12	16	24	12	16	24	12	16	24
087F125	30EQ	57	Single	5'-7"	5'-1"	4'-5"	4'-10"	4'-5"	3'-10"	3'-9"	3'-5"	3'-0"
			Multiple	6'-10"	6'-3"	5'-5"	6'-0"	5'-5"	4'-9"	4'-8"	4'-3"	3'-8"
			Single	6'-8"	6'-0"	5'-3"	5'-9"	5'-3"	4'-7"	4'-6"	4'-1"	3'-7"
150F125	30EQ	57	Single	8'-5"	7'-8"	6'-8"	7'-5"	6'-8"	5'-10"	5'-8"	5'-2"	4'-6"
			Multiple	10'-5"	9'-6"	8'-4"	9'-2"	8'-4"	7'-3"	7'-1"	6'-5"	5'-7"
			Single	10'-1"	9'-2"	8'-0"	8'-10"	8'-0"	7'-0"	6'-10"	6'-2"	5'-5"
43EQ	57	Multiple	12'-6"	11'-4"	9'-11"	10'-11"	9'-11"	8'-8"	8'-5"	7'-8"	6'-8"	

Furring Channel Allowable Ceiling Spans L/360												
Section	Thickness (mils)	F _y (ksi)	Spans	Applied Load								
				4 psf Hat Spacing (in) o.c.			6 psf Hat Spacing (in) o.c.			13 psf Hat Spacing (in) o.c.		
				12	16	24	12	16	24	12	16	24
087F125	30EQ	57	Single	4'-10"	4'-5"	3'-10"	4'-3"	3'-10"	3'-4"	3'-3"	3'-0"	2'-7"
			Multiple	6'-0"	5'-5"	4'-9"	5'-3"	4'-9"	4'-2"	4'-1"	3'-8"	3'-3"
			Single	5'-9"	5'-3"	4'-7"	5'-1"	4'-7"	4'-0"	3'-11"	3'-7"	3'-1"
150F125	30EQ	57	Single	7'-5"	6'-8"	5'-10"	6'-5"	5'-10"	5'-1"	5'-0"	4'-6"	3'-11"
			Multiple	9'-2"	8'-4"	7'-3"	8'-0"	7'-3"	6'-4"	6'-2"	5'-7"	4'-11"
			Single	8'-10"	8'-0"	7'-0"	7'-9"	7'-0"	6'-2"	6'-0"	5'-5"	4'-9"
43EQ	57	Multiple	10'-11"	9'-11"	8'-8"	9'-7"	8'-8"	7'-7"	7'-5"	6'-8"	5'-10"	

Notes: 1. Allowable ceiling spans based on effective properties.
2. Multiple span indicates two or more equal spans with channel continuous over center support.
3. Bearing length = 1".